

but is brittle at room temperature. At higher temperatures, ductility is restored. This couple shows a Kirkendall effect with void formation occurring in the molybdenum-50 w/o rhenium after 1-hr. exposure at 2200° C. This is attributed to depletion of molybdenum from the alloy into the tungsten.

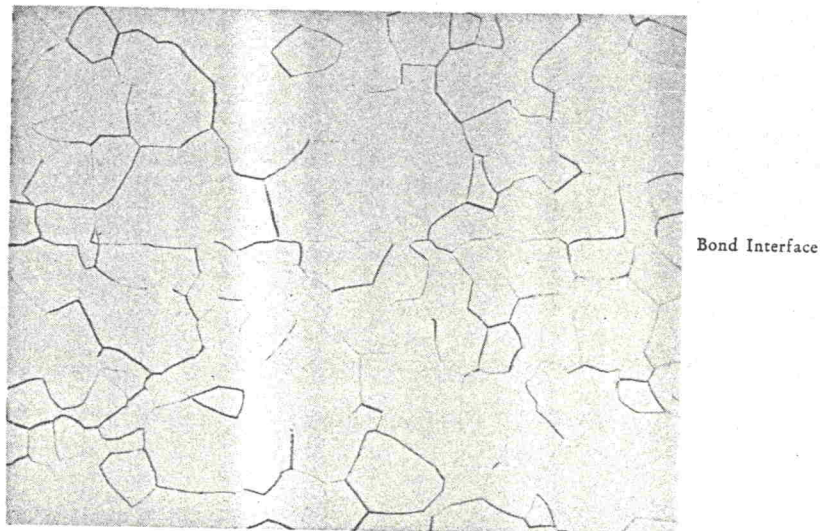


Fig. 7. Molybdenum-50 w/o rhenium self bond.  $\times 250$ .

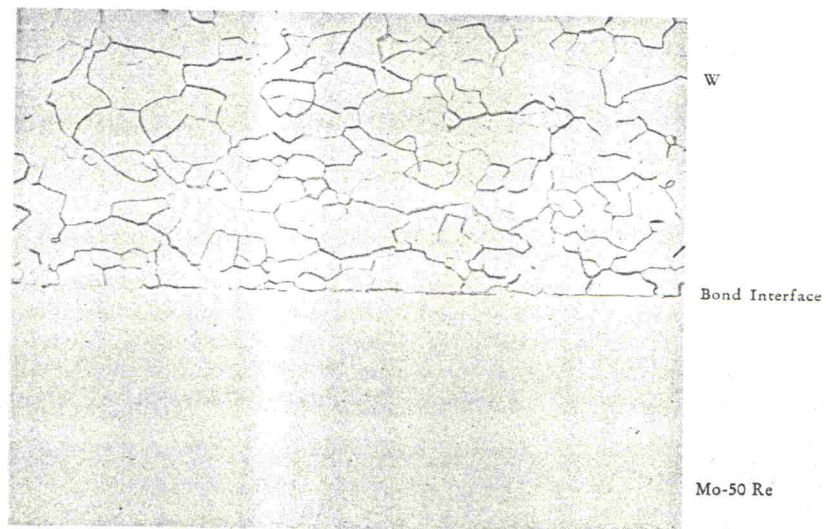


Fig. 8. Molybdenum-50 w/o rhenium bonded to tungsten.  $\times 250$ .